

A close-up photograph of a modern window handle and lock mechanism. The handle is a long, cylindrical, brushed metal bar with a square end. The lock is a circular, brushed metal knob with a square-shaped top. The background is a solid, light blue color.

MALTA[®]
HARDWARE
RANGE



MALTA[®] HARDWARE

A TOUCH OF ARCHITECTURAL ELEGANCE

Now you can give your windows and doors the exact look you're after with the Malta hardware range. Specifically designed to match the Window and Door Suite of your choice, Malta is a style to please every taste - from elegantly discreet to distinctly architectural. And every piece is built to last.

CONTENTS

Distinctive products	4
Product features and benefits	10
Complementary products	18

**MALTA[®] HINGED
DOOR HANDLE**



**MALTA[®]
INTERNAL FURNITURE**



A close-up photograph of a silver-colored metal handle for a bifolding door. The handle is rectangular with rounded ends and is mounted on a matching metal track. It features a central keyhole and two screws on each side. The background is a solid light blue.

**MALTA[®] BIFOLD
HANDLE**

A close-up photograph of a silver-colored metal flush pull for a sliding door. The pull is a long, narrow rectangular piece with a recessed grip area. It is mounted on a metal track with a keyhole and screws. The background is a solid light blue.

**MALTA[®] SLIDING
DOOR FLUSH PULL**

**MALTA[®] SLIDING
DOOR D HANDLE**



**MALTA[®] WINDOW
FASTENER**



MALTA[®] ENTRANCE DOOR SETS

As the focal point for most homes, the entrance door demands more decorative hardware.

The Malta entrance door sets are available in stainless steel, satin chrome or powder coated finishes and are sure to make a good first impression.

Our large Malta D handle is matched with large 50mm backset mortice locks, available in both two and four-point lock options for increased security and weather performance.

The package also includes a turn knob or mini lever set (to retract the door latch and throw the multipoint rods), plus a choice of round or square escutcheons and Euro profile five-pin cylinders.



MALTA[®] HINGED DOOR HANDLE SETS

These elegant door handle sets are available in a range of options, all designed specifically to complement your preferred Window and Door Suite.

Locking options include two and four-point mortice locks with 30 or 40mm backsets, coupled with five-pin Euro profile half and full cylinders. Both options are available with and without turn knobs.

The Malta hinged door handle can also be used in French Doors, perfect for operating a concealed bifold lock used in the passive panel.



MALTA[®] INTERNAL FURNITURE

The Malta internal furniture range perfectly complements any Malta hardware used on the perimeter of a home. It is available in a satin chrome finish.

Based on the Velocity platform from Lockwood, it sets a benchmark in ease of installation and includes passage sets for connecting doors, privacy sets for bathroom and toilet doors and dummy half sets for use on cupboard and wardrobe doors.



MALTA[®] BIFOLD HANDLE SETS

The Malta bifold handle set is an elegant, low profile handle designed to operate a two-point bifold lock.

This combination can be used in the place of two flush bolts to provide a single point of operation. For additional security, an internal locking option is available.

You can further customise by choosing between 'in-stile' and morticed lock options.



MALTA[®] SLIDING DOOR FLUSH PULLS

Available in two different sizes (250 and 140mm), these flush pulls are a simple, unobtrusive solution for sliding doors and windows. They sit just 3mm off the extrusion surface, which together with their sleek, low profile design makes for a modern and stylish look.

Malta flush pull kits are supplied with a morticed sliding door lock and includes a removable Malta styled turn knob, which provides an alternative, more convenient locking option than a key.



250mm option



140mm option

MALTA[®] SLIDING DOOR D HANDLES

The Malta D handles are a non-intrusive, stylish option for large or small sliding doors. As with the Malta flush pulls, these handles are kitted with a single point mortice lock and matching cylinder escutcheon.

You can choose either the 400 or the 200mm option depending on the size of your door, or preference. As with the rest of the Malta range these handles have been matched with a range of locks, Euro five-pin cylinders and strikes to cover your preferred Window and Door Suite.



400mm option



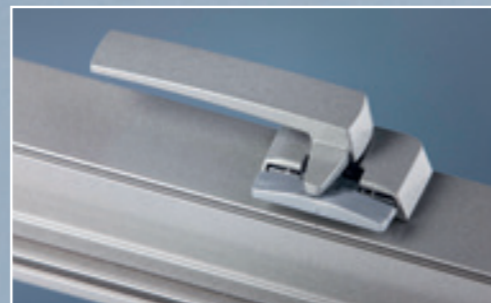
200mm option

MALTA[®] WINDOW FASTENERS

These simple yet solid window fasteners are available in a number of styles, including low profile, high profile and opposed tongue venting.

Low profile fasteners are ideal for cases where a sliding door passes to the inside of an opening sash, whereas high profile fasteners are the more ergonomic choice and allow more finger room. Both of these options are available in left and right hand configurations and rotate through 90° from the horizontal closed position to the vertical open position. Completing the range is the opposed tongue venting fastener, which enables the window to be put into a vented position, whilst maintaining a degree of security.

All Malta window fasteners are designed with an integral colour-matched wedge, which eliminates the need for a separate wedge to be attached to the frame.



Low profile



High profile



Venting

MALTA[®] SASH PULLS

The Malta sash pull is an accessory that complements the rest of the Malta range. It is largely used on sliding windows or on particularly large projected window sashes.



MALTA[®] TURN KNOB

The Malta turn knob is a custom-designed component that's both easier to use and easier on the eye. Working with Euro profile cylinders, the Malta turn knob offers the convenience of a fixed turn knob, yet can be removed if additional security is required.



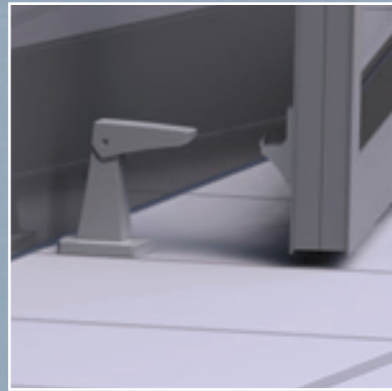
COMPLEMENTARY PRODUCTS

STEADFAST HOLDBACK DOOR STOP

Available for both the floor and wall, the Yale Steadfast Holdback Door Stop is designed to both cushion the opening of hinged and folding doors and hold them open. Its sleek and robust design is also highly innovative and includes toe-operated release functionality, removing the need to constantly bend down.



Wall mount



Floor mount



Post mount



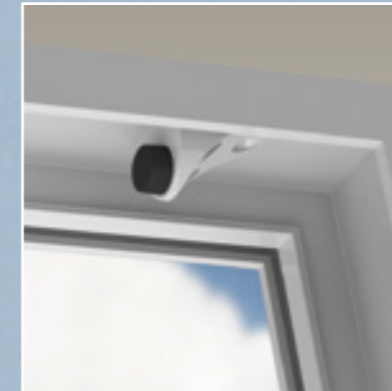
Bifold mount with short door stop

IMPACT SLIDING DOOR STOPS

The Yale Impact Door Stops are designed to cushion the high impact of sliding doors and windows. With a secure and durable design, Impact Door Stops will prevent collision damage.



With cover



Without cover

MALTA[®]

altuswindows.co.nz

YALE WARRANTY. ASSA ABLOY manufactures Malta Hardware and components. All Malta Hardware products are covered by the Yale warranty.

ASSA ABLOY New Zealand Ltd ("ASSA ABLOY") guarantees its Yale products against defects in workmanship and materials. If within 10 years of purchase a product is found to be defective, ASSA ABLOY will supply the same or equivalent product free of charge. ASSA ABLOY assumes no liability under the guarantee for the following: 1. Improper installation or failure to follow fitting instructions. 2. Failure due to improper maintenance. 3. Fair wear and tear. 4. Indirect or consequential loss or damage. 5. Cost of removal and/or replacement. 6. Cost of freight and/or travelling time. 7. Damage to or deterioration of plated finishes (soft finishes).

As deterioration is possible under some environmental conditions, these finishes are excluded from this guarantee. 8. Any modification or repairs to a product, as supplied, unless authorised by ASSA ABLOY. 9. Use of replacement parts other than authorised parts. 10. Malfunction or failure of the product due to the use of non-genuine ASSA ABLOY parts. Nothing in the ASSA ABLOY New Zealand Limited Warranty excludes, restricts or modifies any condition, warranty, right or liability implied or protected by law where to do so would render the Warranty, or any part of it, void.

Your Local Fabricator:

ASSA ABLOY

